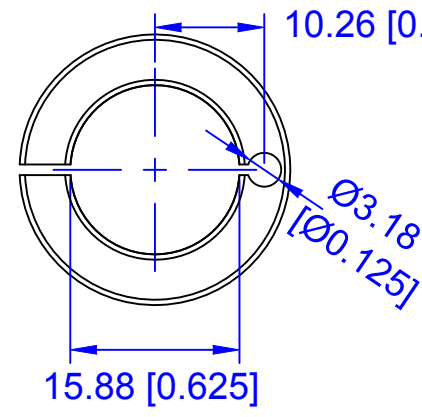
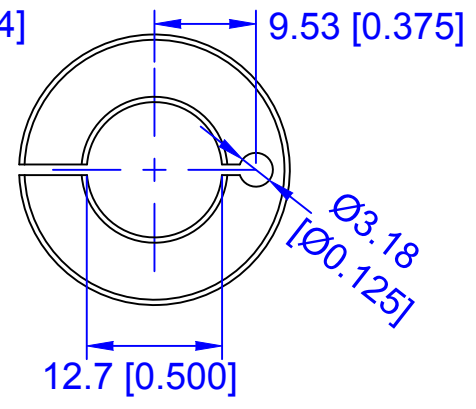


Use 1/4-20 because you can not buy 1/4-28 Carriage SST bolts

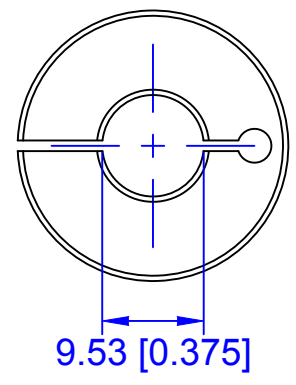
**T-Bolt made from 1/4-28 x 3 Inch Carriage Bolt**  
 Bearing Area 60 sq mm  
 Shank X-Section 28 sq mm



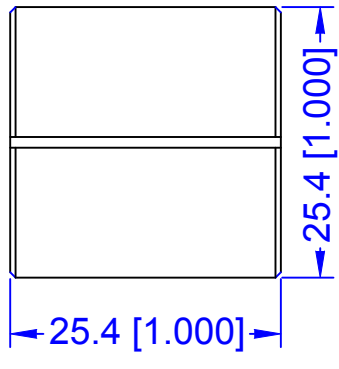
**5/8 Inch Split Bushing**



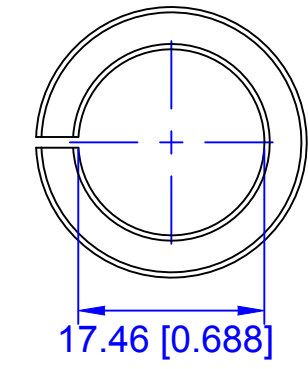
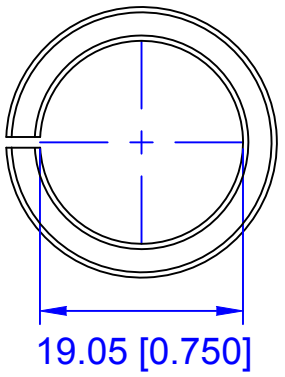
**1/2 Inch Split Bushing**



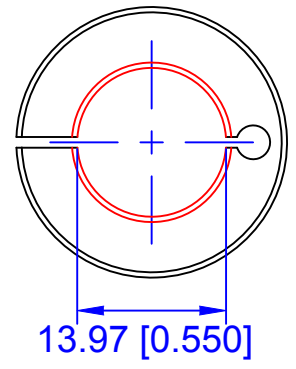
**3/8 Inch Split Bushing**



**3/4 Inch Split Bushing**



**11/16 Inch Split Bushing**



**0.550 Inch Split Bushing**

**NOTES:**

The "Big Bore" tool post is intended to hold large diameter tools such as a 3/4-16 tap exactly on center with the spindle.

This document/file is placed in the **PUBLIC DOMAIN**. The author assumes no liability for the accuracy, fitness or application of the information or design herein. Lewis Balentine, Houston, Texas, 12 February 2020

Unless otherwise noted all dimesions are in millimeters [inches]